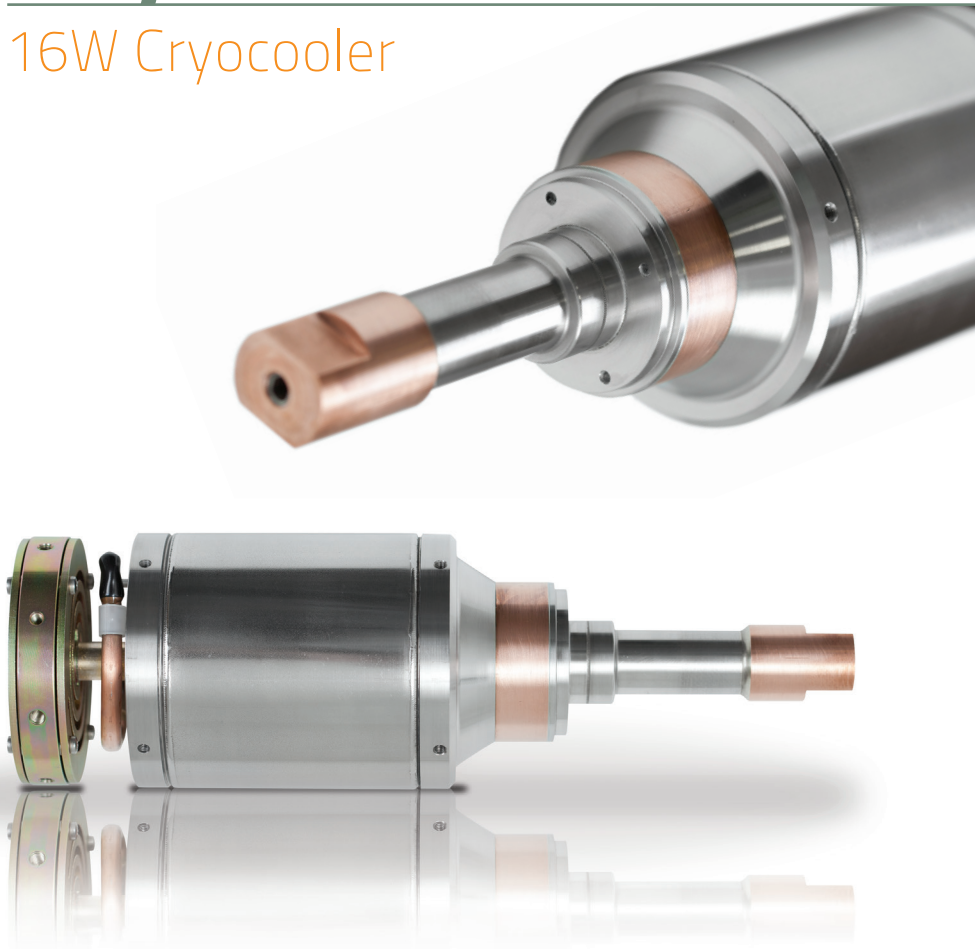


CryoTel® GT

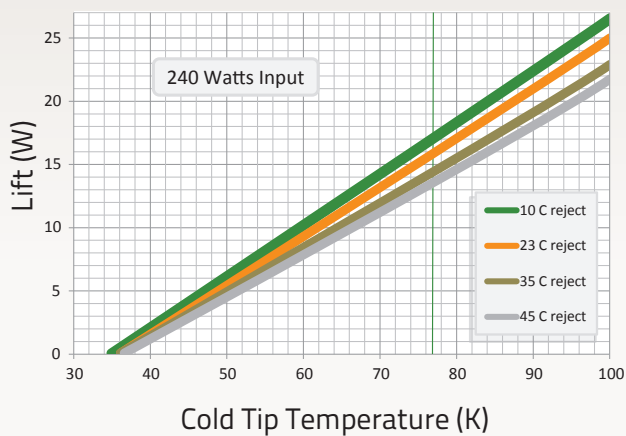
16W Cryocooler

▶ THE MOST EFFICIENT
CRYOCOOLERS
COMMERCIALY AVAILABLE

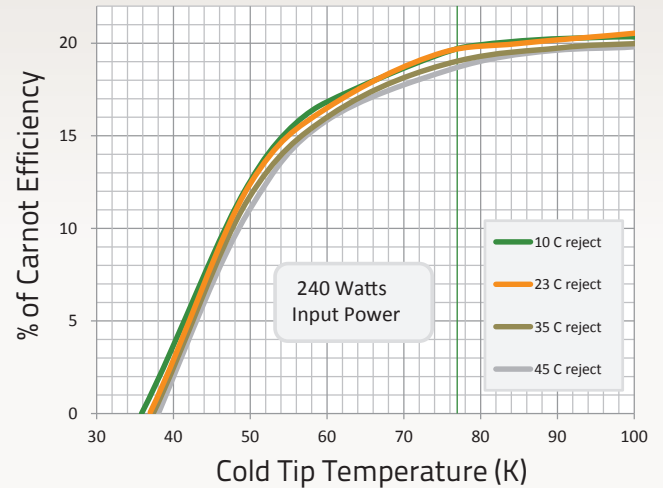
Nominal Lift @ 77K (23° C reject)	16 W
Nominal Input	240 W
Cooler Mass	3.1 kg
Temperature Stability	+ 0.1K
Power Supply	DC 48V
Overall Length	275.5 mm
Outside Diameter	83 mm
Ambient Operation	-40°C to 60°C
Orientation	any
Operating Frequency	60 Hz
MTTF	200,000 hrs



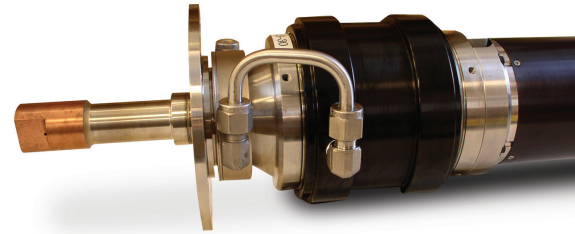
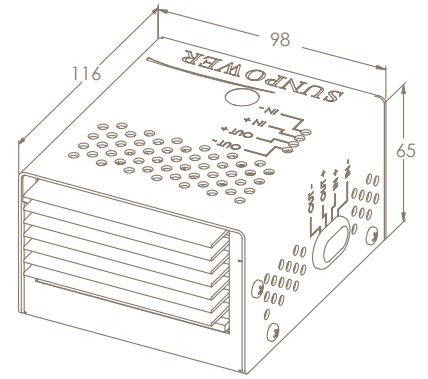
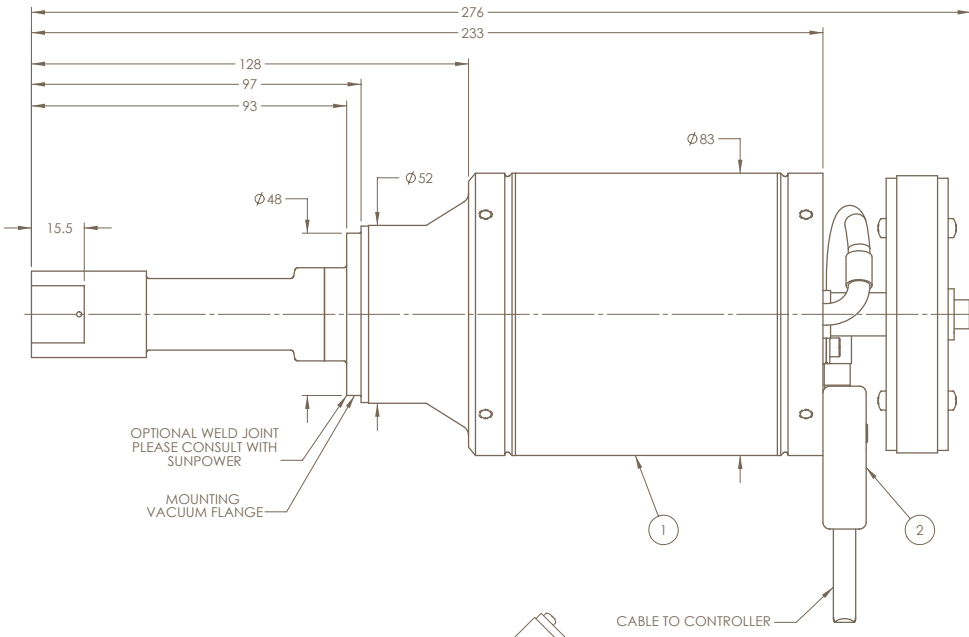
Nominal Performance



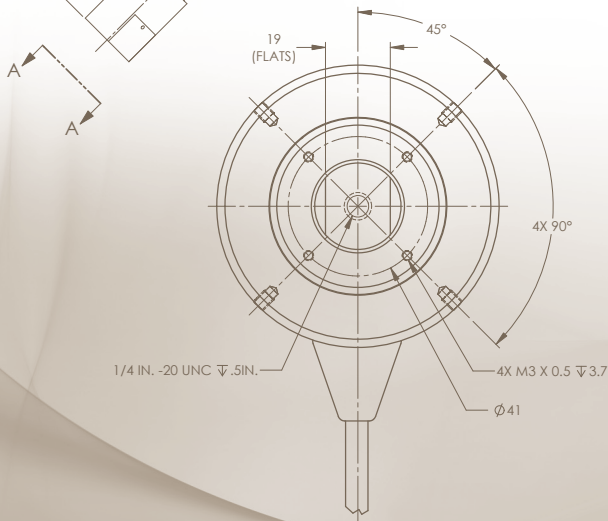
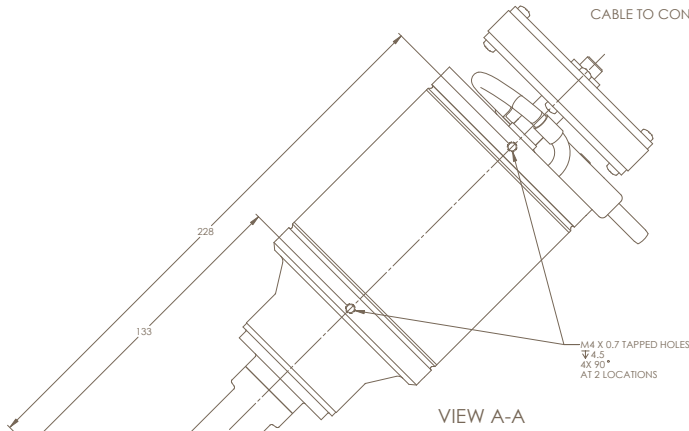
Percent of Carnot Efficiency



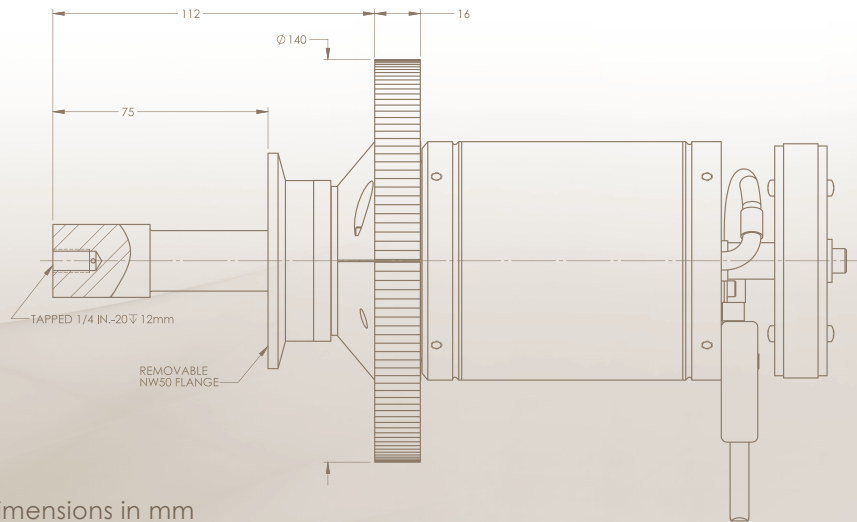
Base GT Cryocooler Dimensions



- ▶ Custom flange, water jacket, pressure vessel back end cooling, and active absorber options shown on a GT cooler



GT Cryocooler with Air Fins and Removable NW50 Flange



All dimensions in mm